

Coastal Utility Bellman's Cart

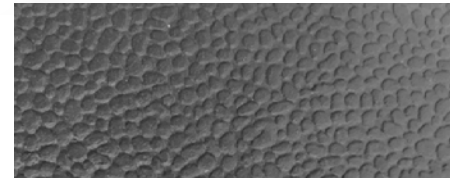
From boxes to bags, this utility cart can make those difficult hallway trips so much easier. A great option for convention/meeting room properties. Coated finish allows versatility for any type of property. Ships in one box to save on shipping and warehousing costs!

- Designed for elevator access
- 2" diameter steel tubing- featuring rust resistant coating
- Black rubber matting, steel deck - wears well; stain and rust resistant
- Two rigid and two swivel 5" semi-pneumatic wheels with black casters
- Wrap around bumpers (non-scuffing)
- Reinforced deck with metal couplings ensure added frame stability
- Carton dimensions: 44" x 27" x 8"; 50#

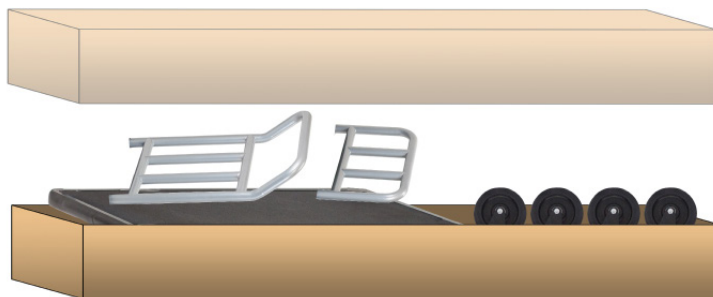


#PVUCC

The All-In-One Series Bellman's Cart ships in one carton saving on shipping and warehousing costs.



Textured deck for extra durability



**Heavy duty shipping carton includes one complete unassembled bellman's cart. Carton contents include one frame, one deck, and four 5" semi-pneumatic wheels, assembly hardware and tools*

Item #
PVUCC

Color
Rust Resistant Finish/
Black Textured Rubber Matting/
Black Bumper

WxHxL
24.75"W x 37"H x 42"L