



M-LUMA-RDLT

LED LIGHTING SOLUTIONS

LOW VOLTAGE DIRECTIONAL LED HEADBOARD READING LIGHT

M-LUMA-RDLT-TP2AB

Metro's LUMA™ Headboard Reading Lights feature a compact, streamlined design with full 360° directional adjustability. Powered by high-quality Nichia LEDs (CRI >90, 36° beam angle), LUMA™ delivers precise, comfortable illumination ideal for bedside and headboard applications.

Distributed by

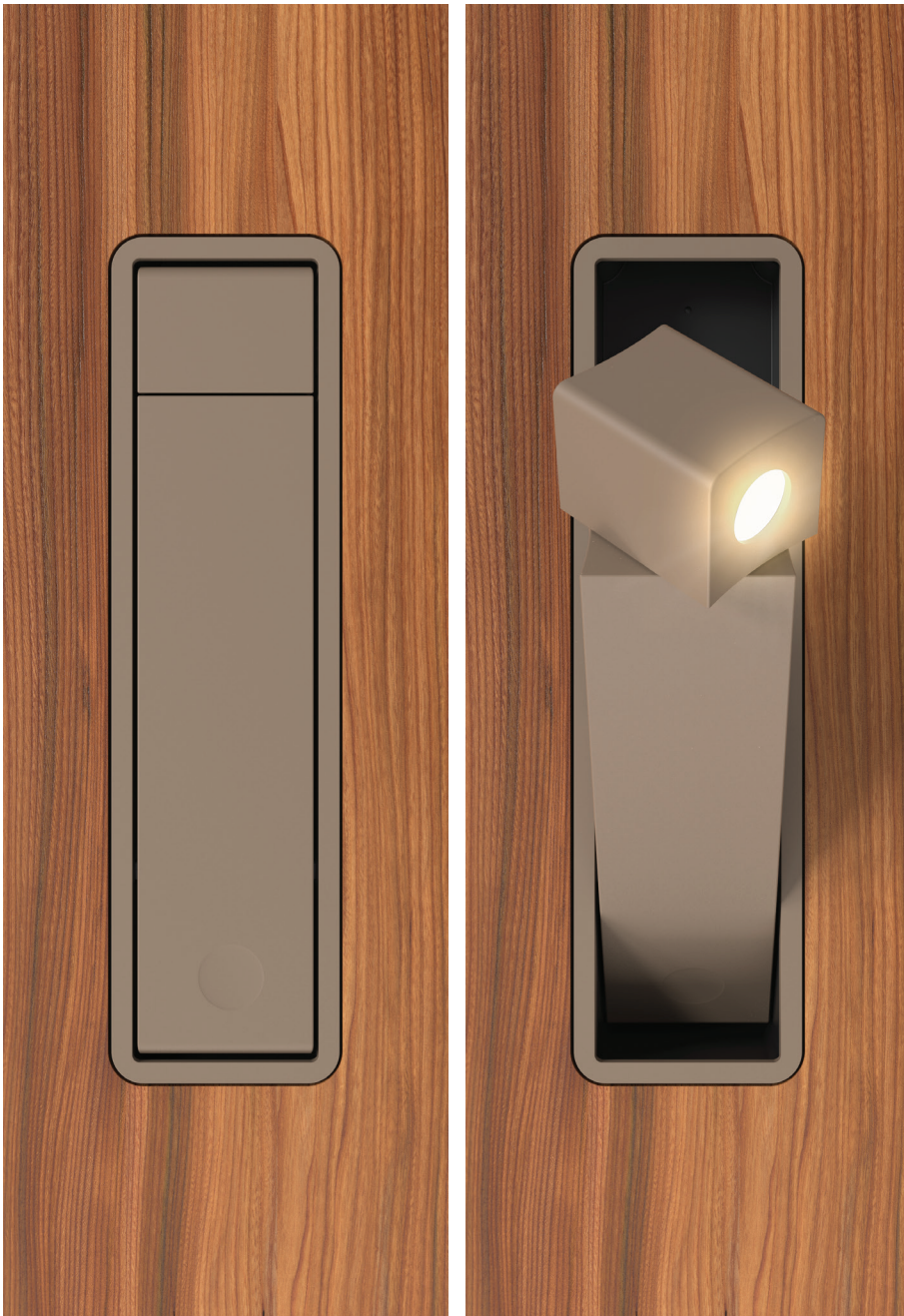


Mormax Company, Inc. 914-699-0101
8 Westchester Plaza sales@mormax.com
Elmsford, NY 10523 mormax.com



Finish: **UNICOLOR™ TAUPE (ABS and METAL)**

Custom Finishes Available M-LUMA-RDLT-TP2AB



Features:

LEDs (Per Fixture):	1
CCT:	3500K
Lm:	210
Power Consumption (W):	3.0W
CRI:	> 90
Operating Voltage (DC):	24V

Driver:

Input Voltage Range:	100Vac-240Vac
Input Frequency:	50Hz/60Hz
Output Voltage (Vdc):	24V
Output Current (mA):	250mA

- CLEAN, COMPACT DESIGN
- LOW VOLTAGE
- HIGH EFFICIENCY NICHIA LED
- PLUG & PLAY
- 345° POSITIONABLE LED LIGHT HEAD
- AVAILABLE IN ELECTRO-PLATED, UNICOLOR™, SOLID METALS, AND CUSTOM FINISHES
- CLASS 2
- LM80 >80,000 HRS
- ETL LISTED
- SET INCLUDES ONE READING LIGHT & 120 VAC --> 24VDC LED POWER SUPPLY (220 VAC --> 24V. INTERNATIONAL POWER SUPPLIES AVAILABLE)





M-LUMA-RDLT

LED LIGHTING SOLUTIONS

LOW VOLTAGE DIRECTIONAL LED HEADBOARD READING LIGHT

M-LUMA-RDLT-TP2AB

Distributed by



Mormax Company, Inc. 914-699-0101

8 Westchester Plaza sales@mormax.com

Elmsford, NY 10523 mormax.com

