



# M-POWER-WLC-US-10-Qi-TM

## METRO 10W WIRELESS CHARGING UNIT

TOP MOUNTED 10W WIRELESS CHARGER SET FOR ANDROID AND IPHONE WIRELESS ENABLED CELL PHONES (Qi CERTIFIED)



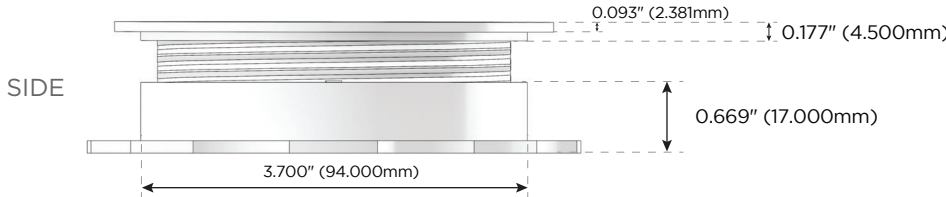
Mormax Company, Inc.  
8 Westchester Plaza  
Elmsford, NY 10523

914-699-0101  
sales@mormax.com  
mormax.com

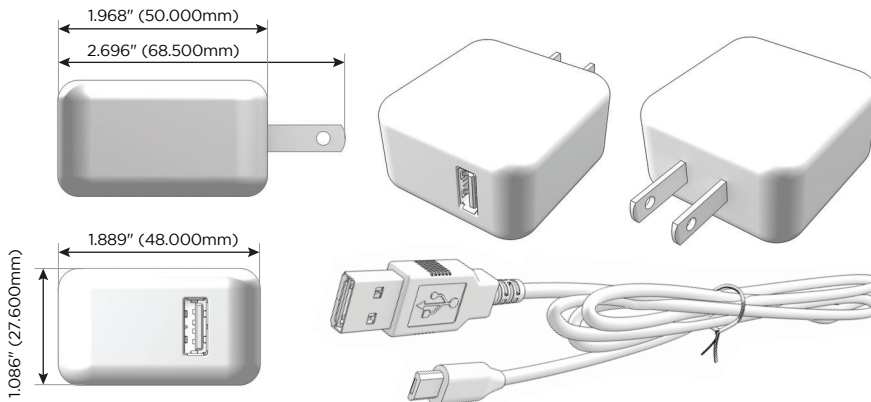
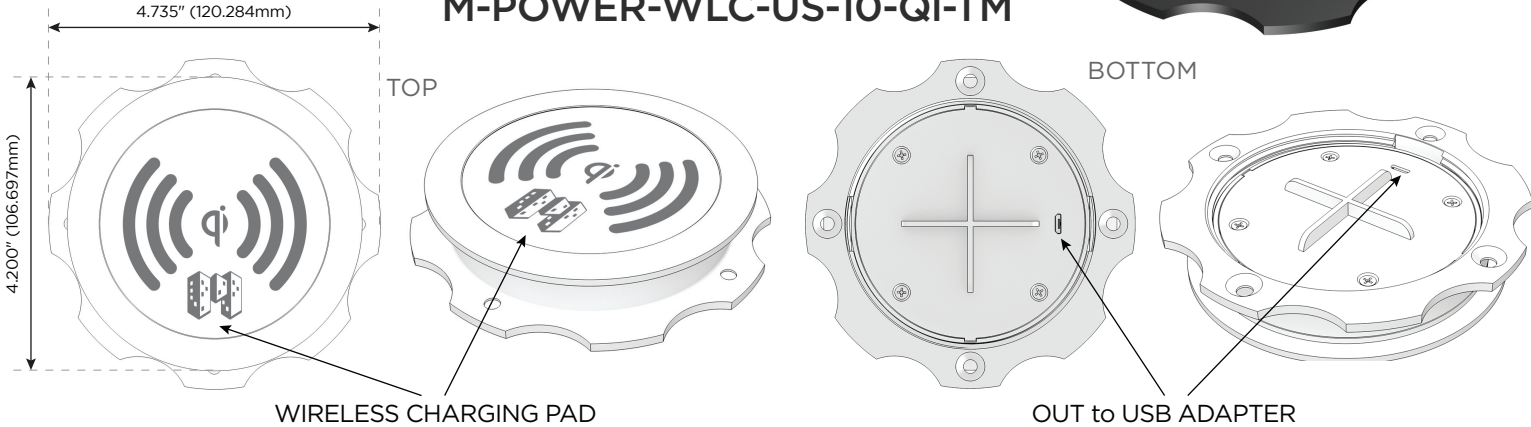
### Features:

<b>Charger Dimensions:</b>	
<b>Length</b>	4.200" (106.697mm)
<b>Width</b>	4.200" (106.697mm)
<b>Height</b>	0.846" (21.500mm) < (Adjustable)
<b>Mounting Hole Diameter</b>	3.779" (96.000mm) for CNC, (3 3/4" Hole Saw)
<b>Adapter:</b>	
<b>Input Voltage</b>	110-240 VAC (50-60 Hz.)
<b>Output Voltage</b>	5V/3A; 9V/2A; 12V/1.5A
<b>Adapter Dimensions:</b>	
<b>Length</b>	2.696" (68.500mm)
<b>Width</b>	1.889" (48.000mm)
<b>Height</b>	1.086" (27.600mm)

- **Qi FAST CHARGING WIRELESS CHARGER**
- **SIMPLE TO MOUNT, ADJUSTABLE FOR MATERIAL THICKNESSES OF 0.63" TO 1.10"**
- **OVERCURRENT PROTECTION AND SHORT-CIRCUIT PROTECTION**
- **INPUT: USB-QC2.0/3.0**
- **PRODUCT SUPPORT (TYP): SAMSUNG - 10W; IPHONE - 7.5W; Qi - 5W**
- **WPC Qi V1.2.4 CERTIFIED, COMPATIBLE WITH ALL Qi ENABLED DEVICES**



### M-POWER-WLC-US-10-Qi-TM



6ft USB-A to Mini USB-B Charging Cable included.

